



# Welcome Back Online and Hybrid Faculty

**August 19, 2014**  
Office of Distance Learning



UNIVERSITY  
OF  
LOUISIANA  
*L a f a y e t t e*

# Agenda

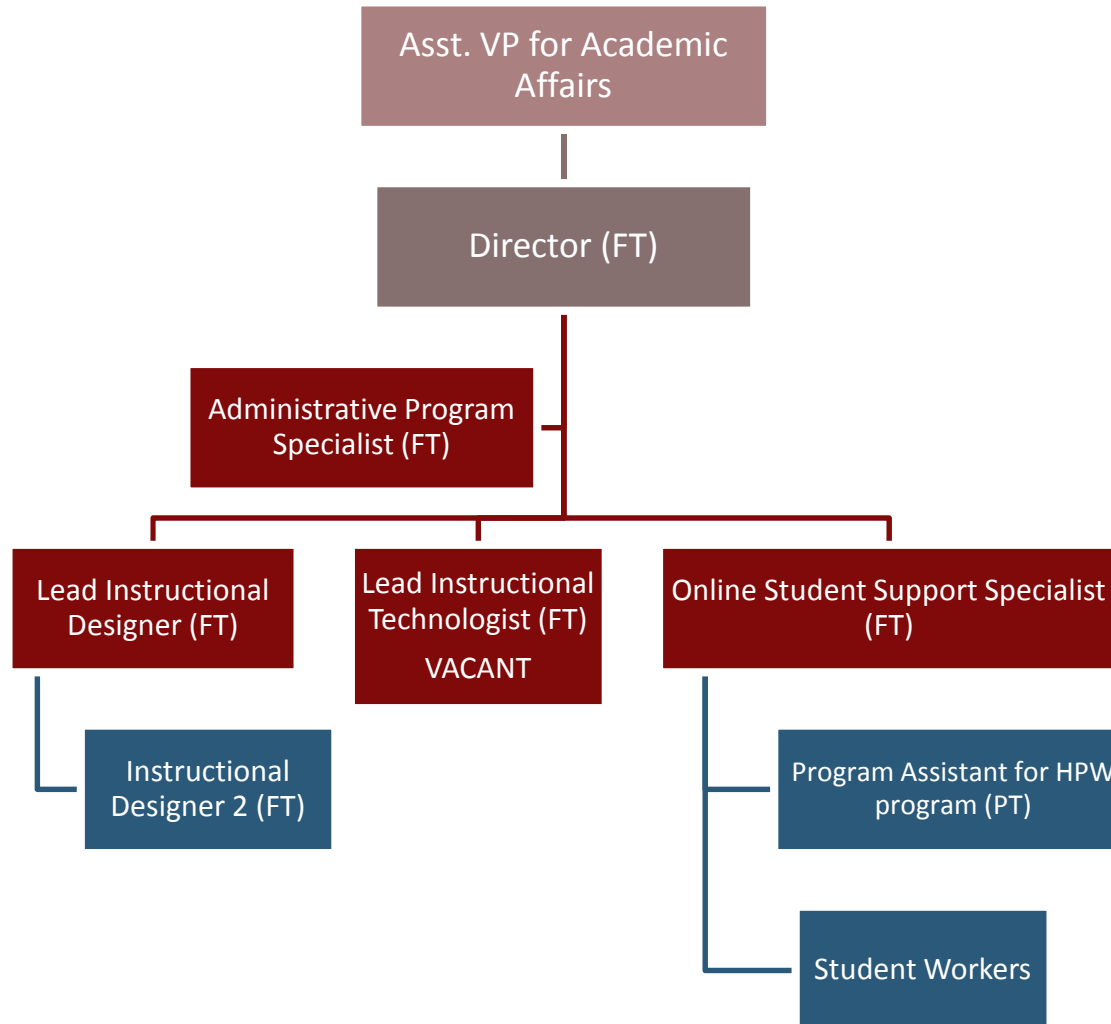
- ODL Services
- What's New? Tools and Resources
- Student Services
- Join in!

# ODL Services



UNIVERSITY  
OF  
LOUISIANA  
*L a f a y e t t e*

# ODL Services: ID Team

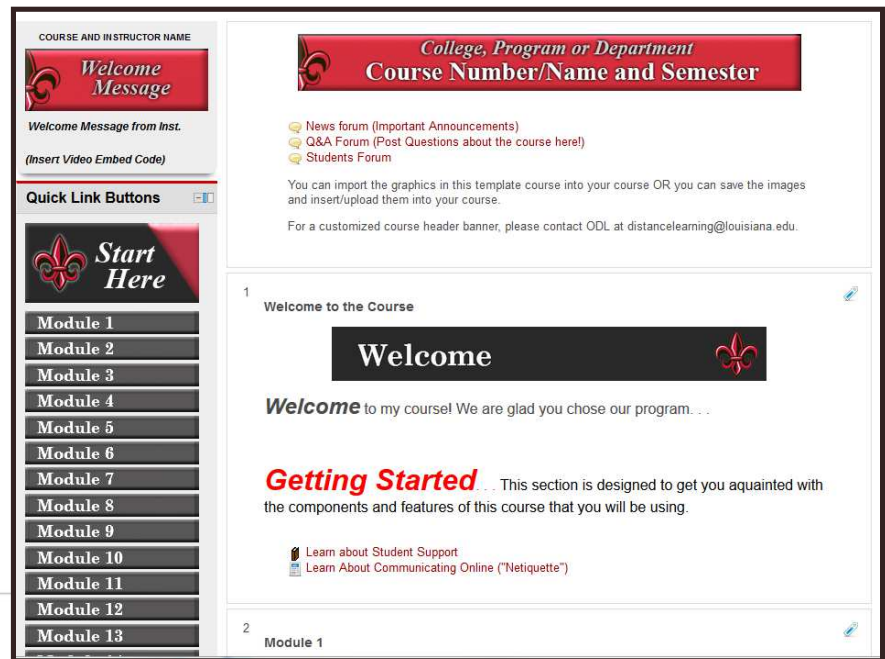


## ODL Services: **ID Team**

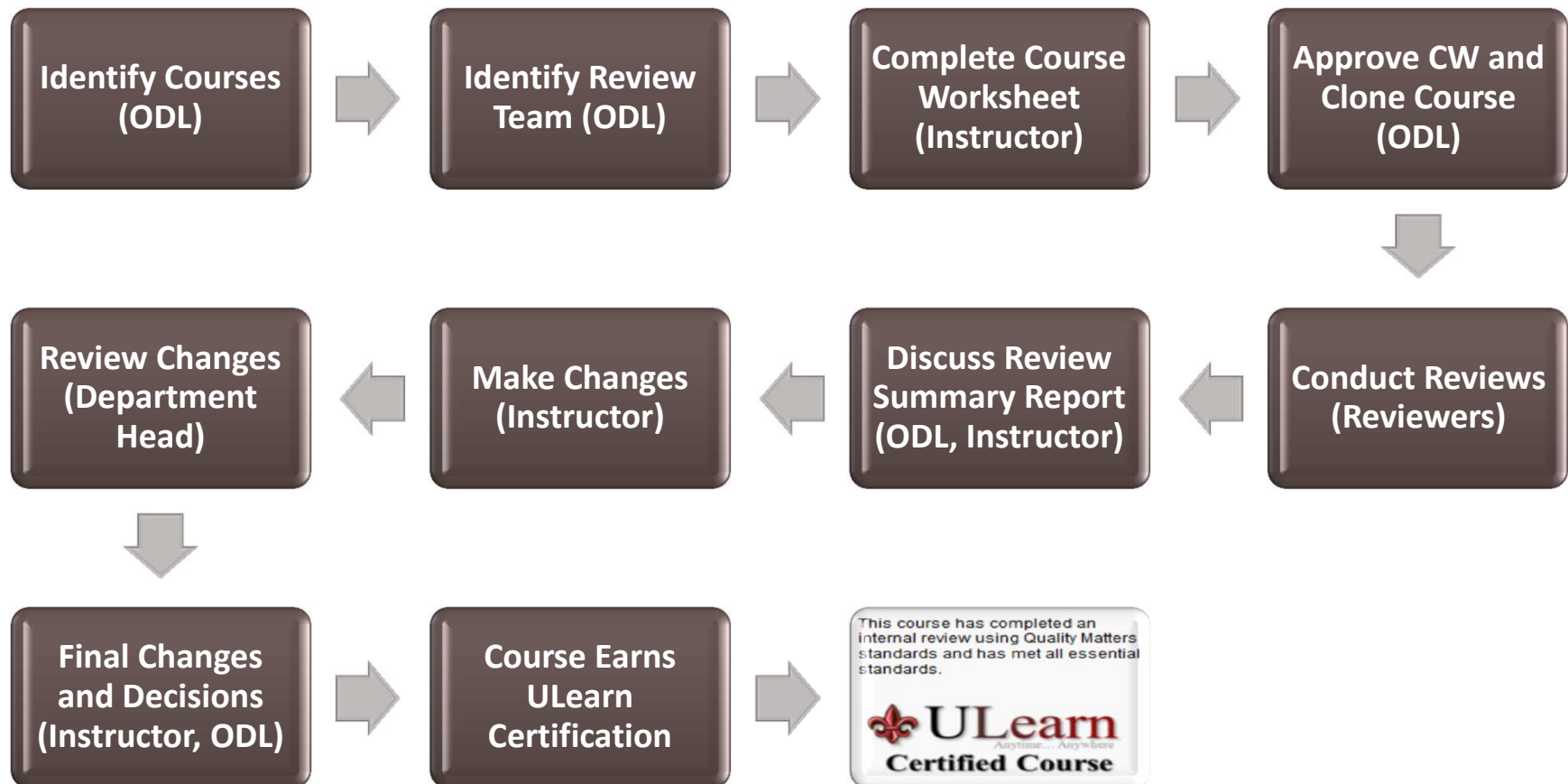
- Who's My Instructional Designer?
  - Arts: Claire Arabie
  - Business: Alise Hagan
  - Education: Alise Hagan
  - Engineering: Alise Hagan and Claire Arabie
  - Liberal Arts: Alise Hagan
  - Nursing & Allied Health: Claire Arabie
  - Sciences: Claire Arabie

# ODL Services: ID Service Plan

- Faculty Certification
  - Initial Certification (Online Teacher, Course Designer)
  - Additional Professional Development Opportunities
- Course Development
  - “Top 5”
  - Navigation and course templates
  - Technology integration
  - Mini-reviews



# ODL Services: **Course Reviews**





# What's New? Tools and Resources



UNIVERSITY  
OF  
LOUISIANA  
*L a f a y e t t e*



# What's New? **Resources**

- Quality Matters 5<sup>th</sup> Edition
  - Everyone has to be updated by November 30, 2014
  - Online refresher: 1 hour

## What's New? **Tech Tools**

- Web Conference



- Lecture Capture



- Engagement



- Academic Integrity



# What's New? **Tech Services**

## ■ After hours / Weekend Technical Support

- Helpdesk.louisiana.edu
- 2-HELP
- ithelp@louisiana.edu
- Don't stop reporting!



## ■ “Account Suspended” block

## ■ Browser Check

- <http://helpdesk.louisiana.edu/get-help/moodle/browsercheck>
- Asking the right questions

\*\*\* IMPORTANT NOTICE \*\*\*

\*\*\*\*\*

**ACCOUNT  
SUSPENDED**

\*\*\*\*\*

Your access to Moodle has been restricted due to unpaid University debts.

Description	Status	Details
Browser Check	✓ Good	Firefox 26.0 is good!
JavaScript enabled	✓ Good	Your JavaScript is enabled.
Java plug-in	✓ Good	You have Java plug-in version 1.7.0_45
Popup Blocker Check	✓ Good	Good to go!
Flash Check	✓ Good	You have Flash 11.9 r900
Adobe Acrobat plug-in	✓ Good	You have the Adobe Acrobat plug-in installed.
Connection speed	✓ Good	Your connection speed of 2285362 bps is good, although for the best performance we recommend 3,000,000 bps or higher.
Cookie Check	✓ Good	Cookies are enabled.

After making any changes [click here to retry this test](#)

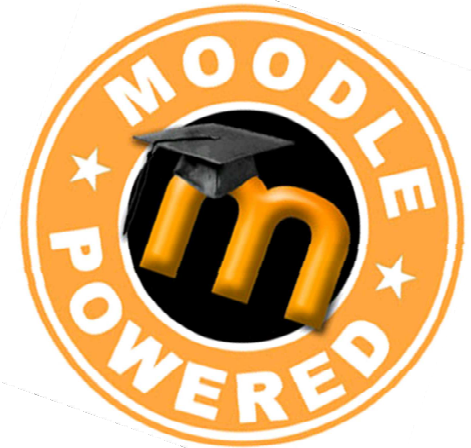
# What's New? **Moodle 2.7 Upgrade**

- Timeline

- Fall 2014: Small Beta Pilot
- Spring 2015: Large Beta Pilot
- Summer 2015: Full Conversion by choice
- Fall 2015: Full Conversion by policy

- Moodle Users Group (MUG)

- October 2014 (poll)
- Goal: Faculty input on Moodle design and functionality



# Student Services



UNIVERSITY  
OF  
LOUISIANA  
*L a f a y e t t e*

# Student Services: **Orientation**

- Requirements
- Completers (367 issued certificates as of 8/14/14)

The screenshot displays the 'UL Lafayette - Office of Distance Learning' website for the 'Online Student Orientation' course. The page features a red header with the course title. On the left, a sidebar includes a 'Welcome Message from Claire' with a video placeholder and a 'Quick Link Buttons' section with a 'Start Here' button and links for Welcome, Learning Online, Student Support, Online Communication, Additional Resources, and Orientation Completion. The main content area has a 'News forum' link and a post titled 'Welcome to the Online Student Orientation Course'. The post includes a 'Welcome' message, a paragraph about the course's purpose, a paragraph about the staff's commitment to quality, and a paragraph encouraging student engagement. A small image of a student working on a laptop is also present. The top right corner shows 'Your progress' with a question mark icon.

UL Lafayette - Office of Distance Learning

**Online Student Orientation**

Welcome Message from Claire  
If you can't view the video below, please [click here](#).

Quick Link Buttons

**Start Here**

Welcome

Learning Online

Student Support

Online Communication

Additional Resources

Orientation Completion

UL Lafayette - Office of Distance Learning  
**Online Student Orientation**

News forum

1 Welcome to the Online Student Orientation Course

**Welcome** to the UL Lafayette Online Student Orientation course! This course provides you with information and resources that you will need to be a successful online student. It has been created to assist you in assimilating to the online learning environment and understanding the rules of engagement as an online learner.

Your success in all forms of learning, including online, is important to my staff and me. The Office of Distance Learning is working hard to incorporate Quality Matters standards into every hybrid and online course design, and there are over 40 ULearn certified online and hybrid courses at UL Lafayette. Our online faculty are also committed to quality, and have completed various trainings to earn faculty certifications. Many have been online students like you.

As a student who earned two of my degrees online, I encourage you to log in every day, read all postings carefully, and work ahead as much as possible. Also, be sure to engage your instructors and fellow students by asking questions and being an active learner.

Your progress ?

# Student Services: Readiness Assessment



Programs	Course Catalog	Get Started	Student Support	About Us 
Nursing	Course Catalog	Request Information	Career Counseling	Staff
Health	Types of eCourses	Readiness Assessment	Advising	Faculty Certification
Education	Certified Courses	Undergraduate Admissions	Academic Support	Accreditation
Systems Technology		Graduate Admissions	Tech Support	State Authorization
		Costs	Student Services & Resources	Vision Statement
		Financial Aid	Accessibility	Contact Us
				Resources for Faculty
				Submit a Complaint

1,290 assessments started

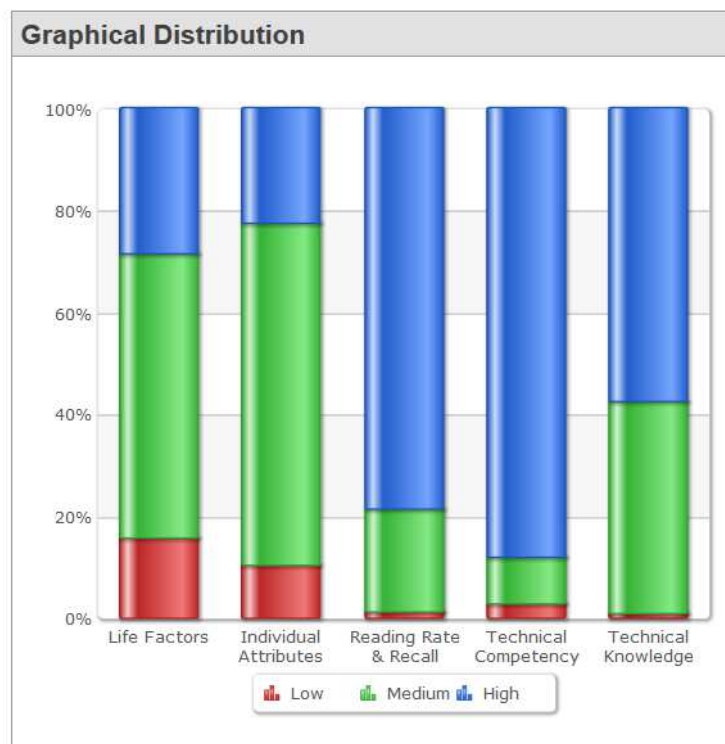
1,029 assessments completed



# Student Services: Readiness Assessment

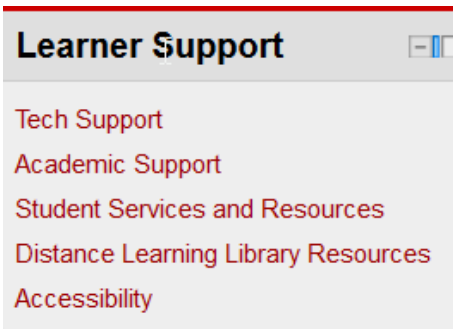


Distribution				
Section	N	High Readiness	Medium Readiness	Low Readiness
Life Factors	1,125	319	627	179
Individual Attributes	1,050	232	707	111
Reading Rate & Recall	971	761	197	13
Technical Competency	955	840	85	30
Technical Knowledge	942	540	393	9





# Student Services: **Learner Support**



## Tech Support

- IT Help
- UCS Account
- LMS Support
- Proctored Exam Technical Requirements
- Web Conferencing System Requirements

## Academic Support

- Online Orientation
- Registration
- Tutoring
- Library Resources for Distance Learners

## Student Services and Resources

*(links directly to Student Services page on Student Affairs website)*

## Distance Learning Library Resources

*(links directly to the Distance Learning Services page on the University Libraries website)*

## Accessibility



**Join In!**



UNIVERSITY  
OF  
LOUISIANA  
*L a f a y e t t e*

# Join In! Opportunities for Faculty

- **Task Forces**
  - Moodle Users Group
  - Student Support
  - Faculty Incentives
  - CAFÉ
- **Pilots**
  - Lynda.com
  - Moodle 2.7

# Join In! **DL Events**

- **DL Events**
  - **October 15, 2:00 pm:** Moodle Users Group (MUG)  
Dupre Library Lounge (room 221)
  - **October 31-November 17:** APPQMR online  
workshop (5<sup>th</sup> edition)
  - **November 10-14:** National DL Week
  - **Mid-December:** Winter Course Reviews
  - **Winter:** EdCamp

## Join In! **Conferences**

- **September 29-October 1:** 6<sup>th</sup> Annual QM Conference (Baltimore)
- **October 15-17:** UPCEA 2014 South Region Conference (Baton Rouge)
- **October 27-30:** E-Learn Conference (New Orleans)
- **October 29-31:** 20<sup>th</sup> Annual Online Learning Consortium International Conference (Orlando)
  - Consider applying for the [Bruce Chaloux Memorial Conference Scholarship Fund](#) (deadline September 10)
- **November 19-21:** WCET Annual Meeting (Portland)

# Questions



UNIVERSITY  
OF  
LOUISIANA  
*L a f a y e t t e*